

Radford and Park

Area Committee Report

Unofficial December 2013 Data

Ward Priorities 2014

Theme	Priorities	Key Actions	Outcome	Lead
Safer	Reduce ASB in neighbourhoods and continue to build confidence and trust	Visible presence across Beat areas. Operation Graduate - January / February 2014 to coincide with student return Weeks of Action / Student Weeks of Action	Increased levels of reporting, reduced levels of crime and ASB and reducing fear of crime / perceptions of crime	Police, Community Protection, Universities
	Reduce street drinking – St Peter's. Promote Designated Public Places Order (DPPO)	Develop St Peter's Action plan to include continued monitoring of Soup Kitchen project and impact locally.	Improved confidence and support towards local agencies	Police, community Protection
Neighbourhoods	Managing waste, flytipping sites, overflowing and contaminated bins	Targetted work around grot spots	Improved levels of cleanliness, partnership approach to problem solving	City Services
	Managing redevelopment sites / derelict buildings	Ongoing regeneration plans around key sites – NCH highrise replacements, Forest Mills, Radford Mills, Sandfields site	Neighbourhood transformation	NCH, City Services, Wates Living UK Regeneration

Ward Priorities 2014

Theme	Priorities	Key Actions	Outcome	Lead
Families	Continue to strengthen offer for children and young people	Sustain Radford Girls Football and Radford Youth Group, Identify new venues for older youth	Families will be healthier, fitter and emotionally resilient with an enjoyable and safe place for children to grow up	Police / Nottingham Forest FC / Children and Families
Health	Increase affordable opportunities at John Carroll Leisure Centre	Resurfacing astro turf Swimming sessions	Increased local take up	Sports and Leisure
Working	Increase in training and employment opportunities including apprenticeships	Support to residents who need help in accessing job search, training courses and CV writing	2 years of funding secured for unemployed 18-24 year olds to access training and jobs in the area through the Youth contract. Delivery model and partners being developed. In discussion with Castle Cavendish about employment priorities for 2014/15 funding	Employment and Skills Team / Economic Development Castle Cavendish

Community Engagement

Ward Walks

Area/Estate	Date/Time	Meeting Point
Radford West (meet Garfield Court residents)	13 February 2014 (2.30pm)	Hartley Road / Addington Street
Leen	13 March 2014 (2.30pm)	Hartley Road / Forster Street
Park	10 April 2014 (2.30pm)	Tunnel entrance
Lenton Triangle	8 May 2014 (2.30pm)	Derby Road / Kimbolton Avenue

Community Meetings

Group	Date	Venue
Radford and Leen Tenants and Residents Association	18 February (6.45pm) 18 March, 15 April	St Peter's Church, Hartley Road / Churchfield Lane, Radford
BRAMTRA (Bramcote Estate Tenants Group)	13 March (6.00pm)	Community Room, Affinity Sutton Housing Centre, Redoubt Street
Radford West Residents Group	11 February, 11 March, 8 April	Pine View Community Room (Ground Floor), The Woodlands, Radford
Lenton Triangle Residents Forum	To be confirmed	PRIMARY, 33 Seely Road,

Community Engagement

Events Delivered

Event	Lead Partners	Date/Time	Venue
Radford/ Lenton Library garden project	Dunkirk and Lenton Partnership, volunteers, City Services	21 November 10.30am	Radford / Lenton Library, Lenton Boulevard
Christmas Lights switch on – Canning Circus	Area 4 Councillors, schools, City Services	Thursday 21 November 3.30pm – 5.30pm	Canning Circus
Consultation – Alfreton Road shops (behind Clifford Street)	NCH, City Services	28 November 1.00pm – 3.00pm	Alfreton Road / Clifford Street
BRAMTRA Christmas event	NCH	Tuesday 17 December 6.00pm – 9.00pm	Sutton Housing, Redoubt Street

Future Events and Activities Planned

Event	Lead Partners	Date/Time	Venue
Sikh Community / health event	Sikh temple, Norton Street / Decade of Better Health	Saturday 12 April (time tbc)	Sikh temple, Norton Street / John Carroll Leisure Centre
Week of Action	City Services plus Neighbourhood Action Team Partners	5 – 9 May 2014	Across Ward

Finance

Ward Councillor Budgets:

Total Amount allocated this period £4,860

Budget Remaining Unallocated £18,084

Area Capital Fund 2013/15:

Total Amount allocated this period £50,000

Budget Remaining Unallocated £106,001 (inclusive of 2013-14 allocation)

Other funding:

NCH: Environment Budget 2013/14 £49,511

Section 106 / other: to be confirmed

Ward Summary

Crime data is shown below for both the current month compared to last year and the year to date.

Ward	Type	Dec-12	Dec-13	Volume +/-	% Change	YTD 12-13	YTD 13-14	Volume +/-	% Change
RADFORD & PARK	Autocrime	28	25	-3	-11%	223	160	-63	-28%
	Burglary	33	8	-25	-76%	120	126	6	5%
	Burglary Other	3	5	2	67%	33	63	30	91%
	Damage	15	6	-9	-60%	140	108	-32	-23%
	Drugs	11	4	-7	-64%	51	68	17	33%
	Fraud	3		-3	-100%	9		-9	-100%
	Other	1	4	3	300%	21	29	8	38%
	Personal Robbery	6	4	-2	-33%	25	37	12	48%
	Robbery Business	1		-1	-100%	3	1	-2	-67%
	Sexual	2	1	-1	-50%	16	15	-1	-6%
	Theft	33	44	11	33%	289	344	55	19%
	Threats	3	1	-2	-67%	26	23	-3	-12%
	Violence	20	25	5	25%	161	176	15	9%
RADFORD & PARK Total		159	127	-32	-20%	1117	1150	33	3%
ASB		45	42	-3	-7%	605	682	77	13%

The summary below shows only year to date figures, and in the case of public realm and fire data, will generally be a month in arrears.

Type	YTD 12-13	YTD 13-14	Volume +/-	% Change
Domestic Violence Crime	65	79	14	22%
Night Time Economy Violence	6	6	0	0%
Hate Crime	12	20	8	67%
Deliberate Fires	24	14	-10	-42%
Cleanliness (Average Score)	87	87	0	0%
Graffiti	95	152	57	60%
Fly-Tipping	373	790	417	112%

Priorities & Targets

The Central Locality has targets to reduce Dwelling Burglary, Shop Theft and Violence. The Locality's performance against Targets is set out below. This shows that the target is being met for Dwelling Burglary, but not for Shop Theft or Violent Crime.

Locality Target Summary																
Locality	Crime Type	Apr-13	May-13	Jun-13	Jul-13	Aug-13	Sep-13	Oct-13	Nov-13	Dec-13	Jan-14	Feb-14	Mar-14	YTD	Proposed year end Position	+/- Target Position
Central	Dwelling Burglary	96	77	71	65	56	59	55	79	69	75	75	75	627	890	-38
	Shop Theft	88	71	96	55	54	27	54	52	57	40	40	40	554	644	30
	Violence	96	114	115	130	130	110	145	109	113	84	84	84	1062	1173	141

Ward Performance

The table below shows how Radford & Park is performing year to date for All Crime and ASB in comparison to the other wards on the Division. High Impact wards are highlighted in blue.

Radford & Park is seeing only a slight increase in All Crime but a relatively high increase in ASB.

Dec 2013		All Crime				ASB			
Locality	Ward	YTD 12/13	YTD 13/14	Change	% Change	YTD 12/13	YTD13/14	Change	% Change
Central	ARBORETUM	968	1109	141	14.6%	712	757	45	6.3%
	BERRIDGE	1149	1171	22	1.9%	821	737	-84	-10.2%
	DUNKIRK & LENTON	807	744	-63	-7.8%	348	273	-75	-21.6%
	RADFORD & PARK	1119	1150	31	2.8%	605	682	77	12.7%
	SHERWOOD	780	985	205	26.3%	351	388	37	10.5%
	WOLLATON EAST & LENTON ABBEY	330	354	24	7.3%	110	117	7	6.4%
	WOLLATON WEST	377	430	53	14.1%	140	138	-2	-1.4%
Central Total		5530	5943	413	7.5%	3087	3092	5	0.2%
City	CITY CENTRE	6138	5638	-500	-8.1%	2160	1872	-288	-13.3%
North	ASPLEY	1326	1194	-132	-10.0%	755	704	-51	-6.8%
	BASFORD	903	940	37	4.1%	542	511	-31	-5.7%
	BESTWOOD	734	808	74	10.1%	491	643	152	31.0%
	BILBOROUGH	968	956	-12	-1.2%	615	611	-4	-0.7%
	BULWELL	1438	1428	-10	-0.7%	919	822	-97	-10.6%
	BULWELL FOREST	689	735	46	6.7%	345	403	58	16.8%
	LEEN VALLEY	547	583	36	6.6%	304	309	5	1.6%
North Total		6605	6644	39	0.6%	3971	4003	32	0.8%
South	BRIDGE	763	648	-115	-15.1%	441	414	-27	-6.1%
	CLIFTON NORTH	527	545	18	3.4%	296	313	17	5.7%
	CLIFTON SOUTH	747	578	-169	-22.6%	458	454	-4	-0.9%
	DALES	790	877	87	11.0%	529	613	84	15.9%
	MAPPERLEY	837	901	64	7.6%	467	448	-19	-4.1%
	ST ANNS	847	941	94	11.1%	822	801	-21	-2.6%
South Total		4511	4490	-21	-0.5%	3013	3043	30	1.0%
Division		22784	22715	-69	-0.3%	12231	12010	-221	-1.8%
Previous Month's Performance					1.0%				-2.8%

Exception Reporting

Dwelling Burglary

Dwelling Burglary is showing a considerable reduction compared to the same month last year, but is still showing an increase for the year to date.

Theft

Theft is the main volume crime category on this ward, accounting for 35% of All Crime on the ward in December. The theft category is also showing an increase this month compared to last year and for the year to date. The table below shows the individual crime categories within this group on a month basis. This shows that Shop Theft is generally the highest category but there was an equal amount of Theft Other during December. Also shown on the table is the percentage of offences where mobile phones are targeted. The percentage rose in December. The shop theft offences were spread across Lidl, Aldi, B & M and Maplin. The Theft Other offences were quite wide spread and involved theft of phones, purses and money from purses.

Offence	Apr	May	Jun	Jul	Aug	Sep	Oct	Nov	Dec	Total
THEFT FROM SHOP	31	21	22	20	16	6	14	12	18	160
THEFT OTHER	6	8	10	11	8	7	11	3	18	82
THEFT OR UNAUTHORISED TAKING OF PEDAL CYCLE	4	7	3	8	5		7	10	5	49
THEFT IN DWELLING OTHER THAN AUTO MACHINE OR METER	4	1	9	5	5	2	2	3	1	32
THEFT FROM PERSON	4	3	1	3	2			2	2	17
THEFT FROM AUTO MACHINE OR METER					1		2			3
THEFT BY EMPLOYEE							1			1
Total	49	40	45	47	37	15	37	30	44	344
% Mobile Phone Theft	6%	13%	9%	13%	16%	20%	14%	7%	20%	13%

Exception Reporting (continued)

Violence

Violence has seen an increase both for the month and year to date. 44% of the offences were domestic related during December and the same proportion applies for the year to date.

All Crime

Radford & Park has only a slightly higher than average crime rate for All Crime but ranks high in respect of Autocrime and Dwelling Burglary. A full breakdown can be found on page 7. ASB levels however are below average, as shown on page 8.

Crime Figures

Crime Types by Rate (per 1000 of population) of the 20 Wards – Figures are Year to Date 2013/14

WARD	ALL CRIME	AUTOCRIME	BURGLARY	DAMAGE	PERSONAL ROBBERY	THEFT	VIOLENCE
ARBORETUM	99.06	5.74	9.60	12.56	5.47	15.52	24.85
ASPLEY	67.76	5.96	5.45	11.80	0.91	10.55	17.25
BASFORD	57.44	7.10	5.43	9.87	1.23	10.43	13.39
BERRIDGE	62.46	7.24	5.84	9.17	1.07	14.21	12.49
BESTWOOD	48.23	3.46	5.19	9.91	1.07	6.21	11.58
BILBOROUGH	56.87	6.73	5.36	10.24	0.95	8.99	12.68
BRIDGE	64.90	3.59	1.64	8.31	1.23	26.04	11.69
BULWELL	88.38	5.69	5.08	18.51	1.92	21.97	17.21
BULWELL FOREST	53.84	3.53	4.04	10.06	1.47	14.25	10.65
CLIFTON NORTH	41.43	3.03	4.11	8.69	1.16	5.66	8.46
CLIFTON SOUTH	41.44	2.51	5.31	7.10	0.86	7.31	10.76
DALES	53.28	4.56	2.73	10.08	0.49	11.36	11.54
DUNKIRK AND LENTON	67.95	10.26	6.68	6.41	0.73	21.43	9.43
LEEN VALLEY	54.48	4.58	5.61	8.78	1.68	11.12	10.00
MAPPERLEY	56.42	7.64	4.48	7.83	0.57	10.73	10.67
RADFORD AND PARK	58.59	8.17	6.43	5.41	1.89	16.69	8.93
SHERWOOD	62.09	5.64	5.97	6.49	1.82	21.41	11.16
ST ANNS	66.80	4.65	3.79	12.10	3.79	7.30	18.61
WOLLATON EAST AND LENTON ABBEY	35.57	3.11	5.73	3.62	0.30	12.86	3.52
WOLLATON WEST	29.03	4.75	4.14	3.39	0.27	7.67	2.85
WARD AVERAGE	58.30	5.40	5.13	9.02	1.44	13.09	11.89

All ASB Figures

All ASB by Rate (per 1000 of population) of the 20 Wards)

WARD	RATE (PER 1000 OF POP.) Dec 2013
ARBORETUM	6.82
ASPLEY	3.40
BASFORD	3.64
BERRIDGE	2.36
BESTWOOD	3.64
BILBOROUGH	3.22
BRIDGE	3.08
BULWELL	3.65
BULWELL FOREST	2.79
CLIFTON NORTH	2.25
CLIFTON SOUTH	2.01
DALES	3.95
DUNKIRK & LENTON	1.47
LEEN VALLEY	3.92
MAPPERLEY	2.02
RADFORD & PARK	2.14
SHERWOOD	1.62
ST ANNS	5.23
WOLLATON EAST & LENTON ABBEY	0.80
WOLLATON WEST	0.47
WARD AVERAGE	2.92

Fire

Table: Volume of Deliberate Primary and Secondary Fires by Ward

Fire Data									
Locality	Ward	Nov-12	Nov-13	Volume +/-	% Change	Ytd 12-13	Ytd 13-14	Volume +/-	% Change
Central	Arboretum	2	0	-2	-100%	13	18	5	38%
	Berridge	7	3	-4	-57%	35	29	-6	-17%
	Dunkirk and Lenton	1	2	1	100%	5	7	2	40%
	Radford and Park	1	1	0	0%	24	14	-10	-42%
	Sherwood	0	3	3	29900%	9	15	6	67%
	Wollaton East and Lenton Abbey	0	0	0	-100%	6	6	0	0%
	Wollaton West	0	0	0	-100%	2	3	1	50%
Central Locality		11	9	-2	-18%	94	92	-2	-2%
North	Aspley	1	0	-1	-100%	45	34	-11	-24%
	Basford	4	2	-2	-50%	40	26	-14	-35%
	Bestwood	5	0	-5	-100%	31	37	6	19%
	Bilborough	3	2	-1	-33%	34	19	-15	-44%
	Bulwell	6	7	1	17%	60	56	-4	-7%
	Bulwell Forest	0	1	1	9900%	28	12	-16	-57%
	Leen Valley	3	2	-1	-33%	20	20	0	0%
North Locality		22	14	-8	-36%	258	204	-54	-21%
South	Bridge	0	2	2	19900%	10	14	4	40%
	Clifton North	1	2	1	100%	10	9	-1	-10%
	Clifton South	2	1	-1	-50%	17	25	8	47%
	Dales	1	1	0	0%	6	13	7	117%
	Mapperley	2	0	-2	-100%	14	10	-4	-29%
	St. Anns	2	1	-1	-50%	22	23	1	5%
South Locality		8	7	-1	-13%	79	94	15	19%
Division		41	30	-11	-27%	431	390	-41	-10%

Note: Where ward boundaries overlap with the City Centre fires that occurred in the City Centre have been **included** in the ward figures.

Community Protection

Data has been received from Community Protection and where postcodes have been listed these have been geo-coded and mapped to determine the Ward. All addresses relate to the address of the Perpetrator.

FPNs are not currently available at ward level.

In December 2013 the following orders were issued:

- **5 Statutory Notices for the Environment**
- **1 Outright Possession Order (Eviction) for ASB**

For enquiries regarding Community Protection court outcomes please contact the Operational Manager for the locality.

Cleanliness Index

Cleanliness Index
Score

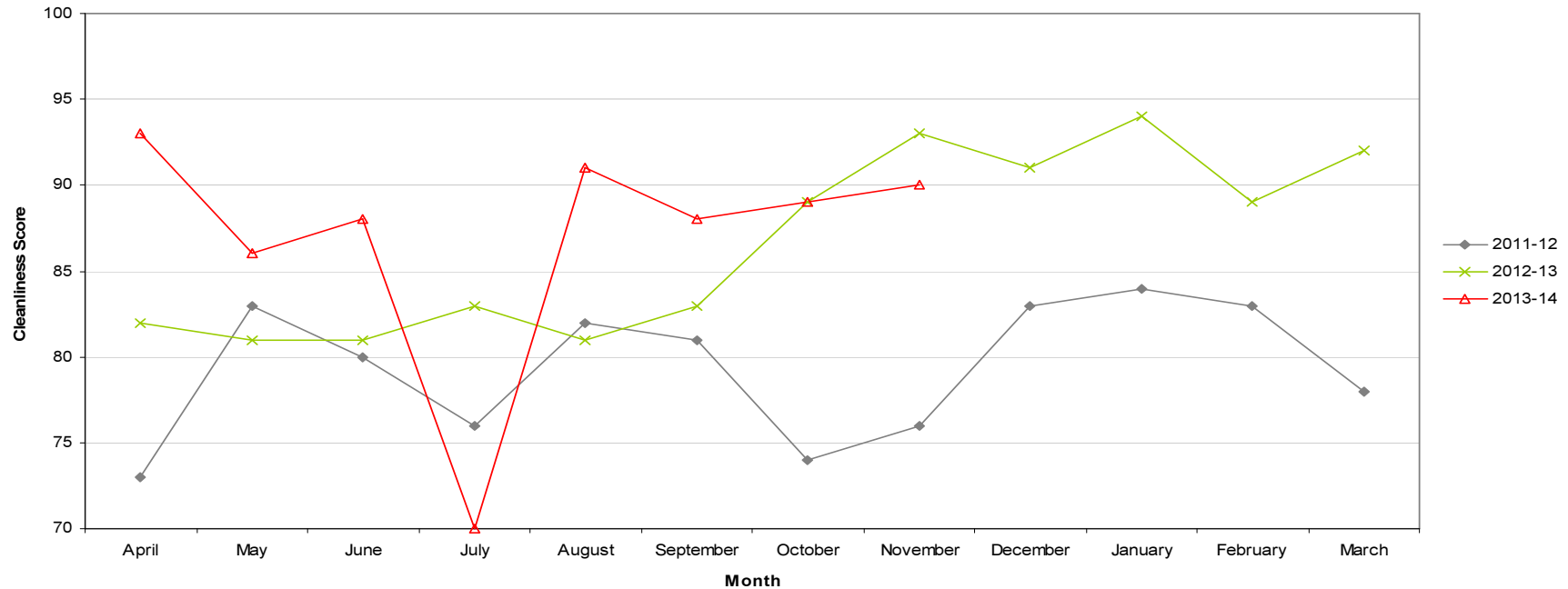
90

Performance compared to
previous year

Performance compared to
neighbourhoods target
of 86

- All data refers to a comparison with the previous year's month
- It is proposed that performance over time graphs be used for each indicator
- Historic data for comparison is not available for dog fouling

Cleanliness Index - Radford & Park

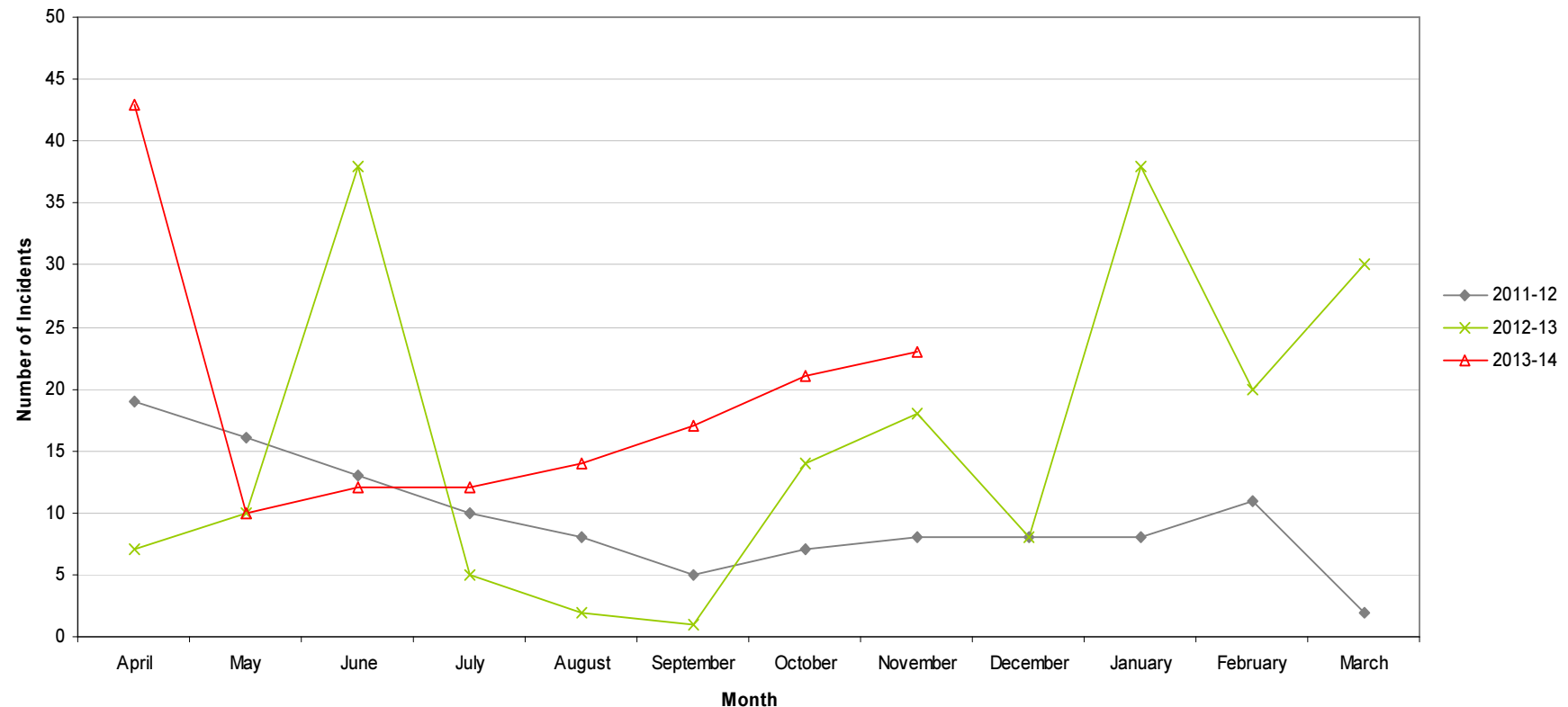


Graffiti Reports

RED	23 incidents	Increase of 5
AMBER		
GREEN		

- All data refers to a comparison with the previous year's month
- It is proposed that performance over time graphs be used for each indicator
- Historic data for comparison is not available for dog fouling

Incidents of Graffiti - Radford & Park

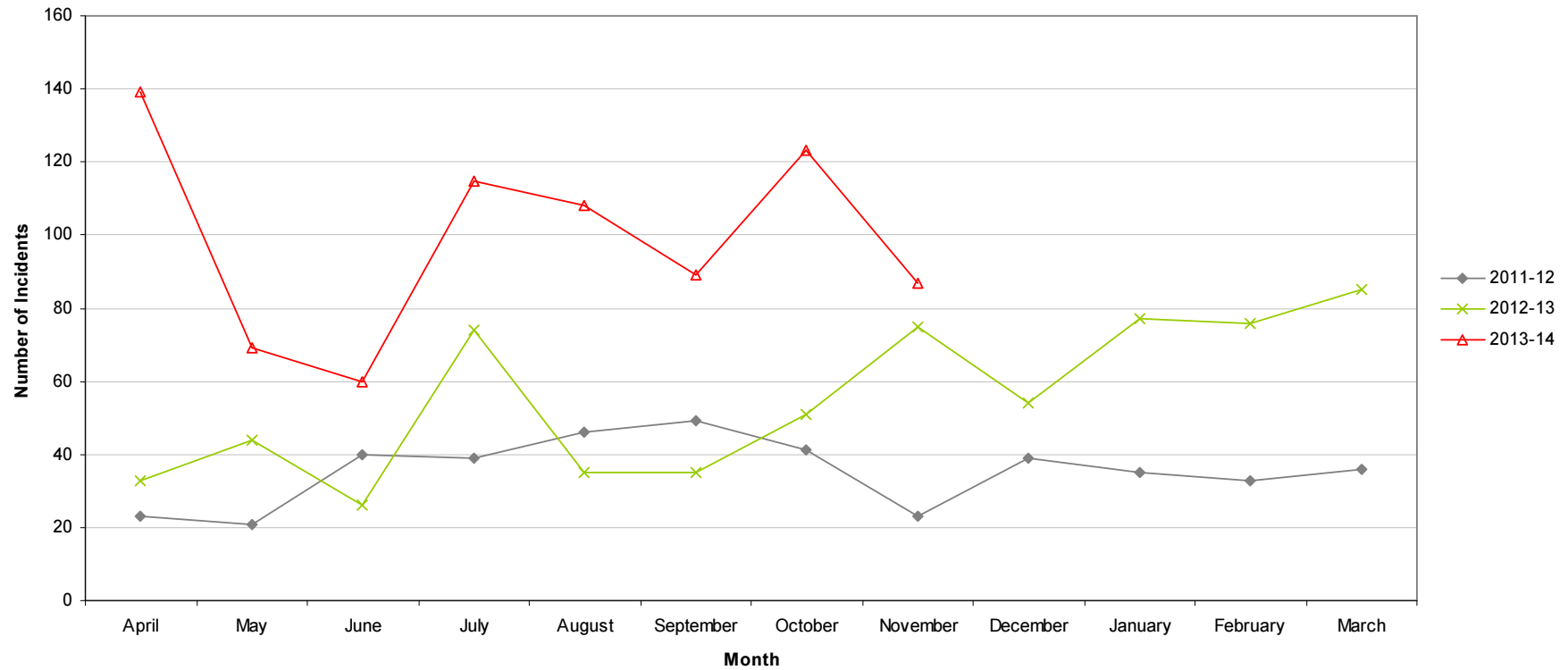


Fly Tipping

RED	87 incidents	Increase of 12
AMBER		
GREEN		

- All data refers to a comparison with the previous year's month
- It is proposed that performance over time graphs be used for each indicator
- Historic data for comparison is not available for dog fouling

Incidents of Fly Tipping - Radford & Park



Housing

Ward Report - Radford & Park

Generated on: 18 December 2013







Anti-social behaviour





Performance indicator and definition	Target	2013/14			2012/13	2011/12
		Value	Status	Long Trend	Value	Value
% of ASB cases resolved by first intervention – Central region <i>Note: This PI monitors how many ASB cases NCH resolved on the first intervention e.g. written warning. Data for this indicator is not available by ward and is reported by Housing Office.</i>	76%	84.55%			78.92%	
% of ASB cases resolved – Central region <i>Note: This PI measures the proportion of ASB cases NCH has successfully resolved. Data for this PI is not available by ward and is reported by Housing Office.</i>	97.8%	100%			100%	97.53%
Number of new ASB cases – Central region <i>Note: Data for this PI is only available by Housing Office.</i>		104			144	229
Tenant satisfaction with the ASB service - Central region <i>Note: Data for this PI is only available by Housing Office.</i>	8	7.48			6.95	6

Housing

Repairs





Performance indicator and definition	Target	2013/14			2012/13	2011/12
		Value	Status	Long Trend	Value	Value
% of repairs completed in target – Radford & Park Ward <i>Note: This PI monitors the proportion of repairs being completed within agreed timescales.</i>	96%	98.01%			94.87%	96.59%
Tenant satisfaction with the repairs service <i>Note: Data for this PI is only available citywide</i>	8.8	8.69			8.64	8.65

Rent Collection



Performance indicator and definition	Target	2013/14			2012/13	2011/12
		Value	Status	Long Trend	Value	Value
% of rent collected – Central region <i>Note: This PI measures the amount of rent collected (including tenant arrears) as a percentage of rent due for the current year. Data for this indicator is not available by ward and is reported by Housing Office.</i> <i>Trend shows as improving if value is over 100% as arrears are decreasing.</i>	8.3%	99%			100.5%	100.6%
% of tenancies ending due to eviction <i>Note: This PI monitors the percentage of tenants being evicted due to rent arrears and is reported citywide.</i>	0.75%	0.69%			0.55%	0.61%

Housing

Empty properties







Performance indicator and definition	Target	2013/14			2012/13	2011/12
		Value	Status	Long Trend	Value	Value
Average void re-let time (calendar days) – Radford & Park Ward <i>Note: This PI measures how long it takes NCH to re-let empty properties from the end of the old tenancy to the start of the new tenancy.</i>	25	16.74			29.62	23.81
Number of empty properties awaiting decommission – Radford & Park ward <i>Note: This PI shows the number of empty properties which will not be re-let and includes those being decommissioned and / or demolished.</i>					54	112
Number of lettable voids – Radford & Park Ward <i>Note: Lettable voids are empty properties available for re-letting. They will receive repair work and then be re-let to a new tenant.</i>		12			19	7

Tenancy sustainment

Performance indicator and definition	Target	2013/14			2012/13	2011/12
		Value	Status	Long Trend	Value	Value
Percentage of new tenancies sustained - Radford & Park Ward (2003) <i>Note: This PI measures the number of new tenants who are still in their tenancy 12 months later.</i>	93.5%	93.18%			94.19%	

Housing

Key:

-  Performance on or exceeding target
-  Performance below target
-  Data only performance indicator
-  Performance has improved compared to two years ago
-  Performance has deteriorated compared to two years ago
-  Performance unchanged

Data prepared by Nottingham City Homes Performance Team

For more information please contact Jonathan Hurst, Performance Data Officer on 0115 9157368 or Marcus Parton, Performance Analyst on 0115 915715

Methodology

Data has not been audited or verified and therefore must only be used as a reflection of crime.

Crime data and ASB calls have been extracted from the Police systems and mapped to ascertain which Ward they occurred in.

Where a ward boundary overlaps with the City Centre, crime data and ASB calls relating to the City Centre have been removed.

Where possible the most recent data is used, although for some areas this may be a month further in arrears.

Discussions continue with other agencies regarding what further data can be included.